

# A New Focus on Materials Management

---

AWMA Spring Conference  
April 25, 2017



# Changing Solid Waste Landscape

- Effective laws = safe and environmentally protective
- Sustainable materials management
- Grow economic, environmental and quality of life outcomes
- 2007 Policy = waste as a resource



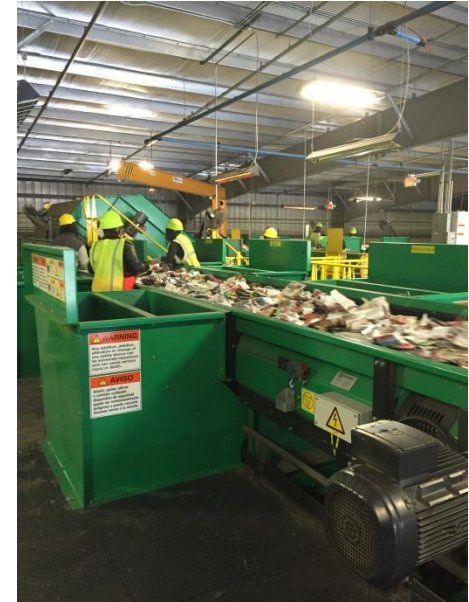
# What's the issue?



Inconsistent extent of regulation for facilities



Low municipal recycling rate



Recycling infrastructure

## 2 Advisory Groups Converge

---

- Governor's Recycling Council
- Solid Waste and Sustainability Advisory Panel



# Key Messages

---

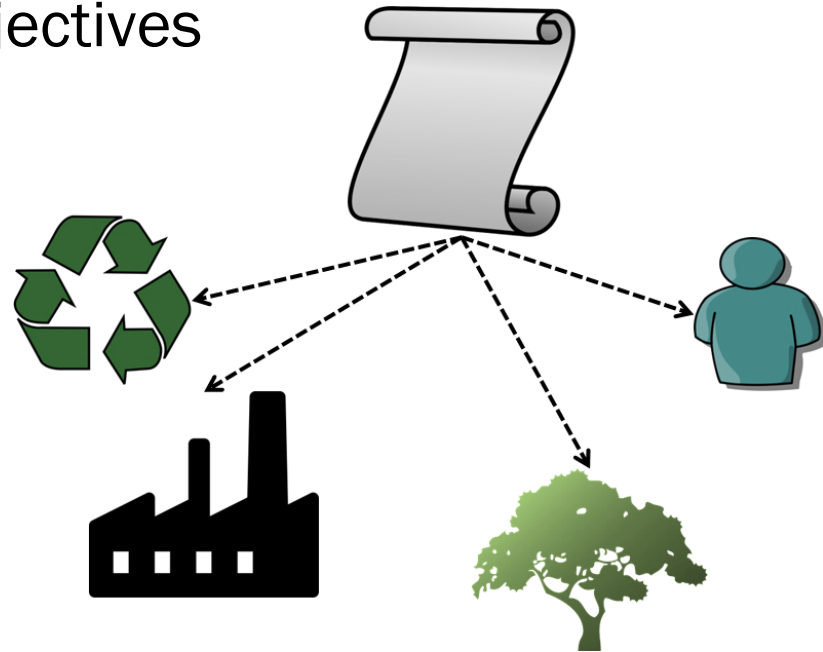
- Holistic infrastructure system to manage materials more sustainably
- Revitalized solid waste law
- Actionable steps to achieve Governor's recycling goal
- Broad-based, long-term public and private funding



# Materials Management Planning

---

- Focus on utilization capacity
  - Measurable goals and objectives
- No import/export limits
- Tighten process
- Promote regional planning
- Benefits





# Materials Management Facility Oversight

---

- Formerly exempt activities
- Inspections
- General permits
- Benefits



# Technical Fixes and Regulatory Improvements

---

- Landfill custodial care
- Financial assurance
- CCR
- Benefits





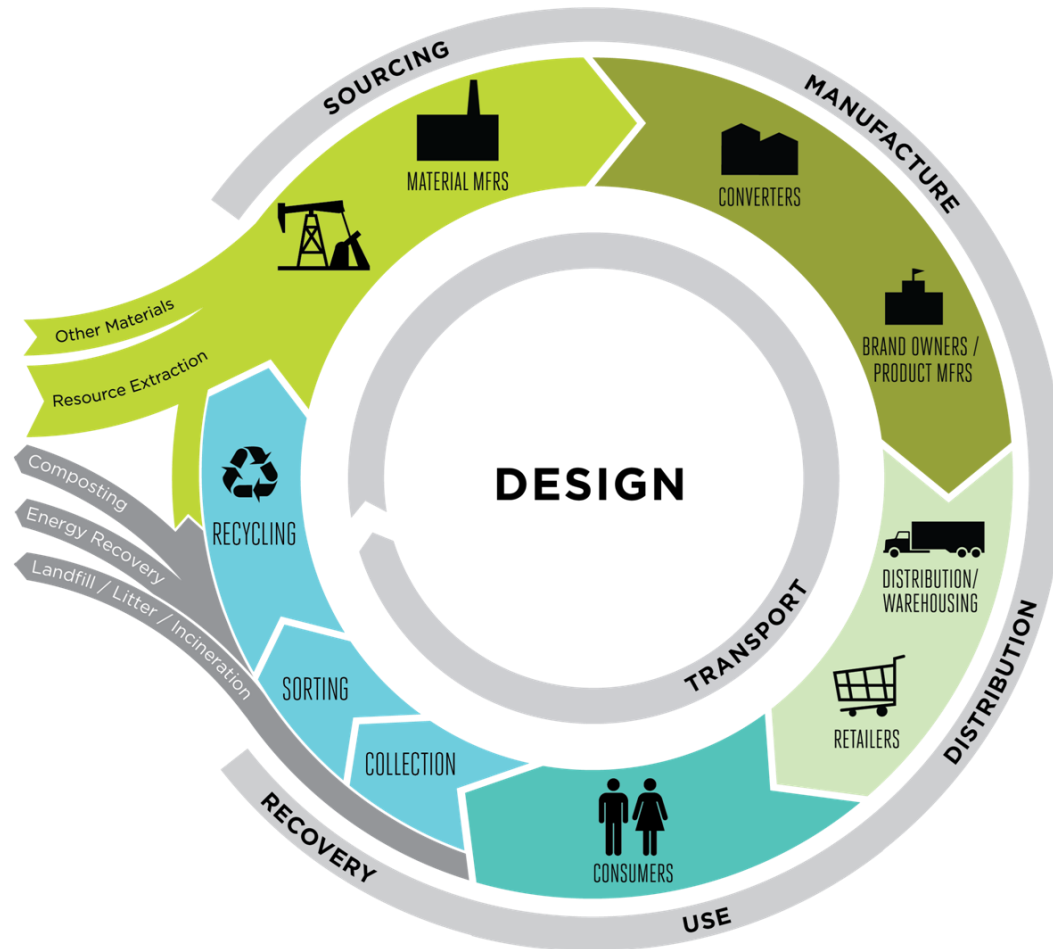
# Recycling Access

---

- Curbside and drop-off
- Convenient comprehensive recycling universally accessible
- Include in MMPs
- Public and private sector solutions



# Recycling Market Development & The Circular Economy



# Michigan Recycling Market Development Initiative

---



- Technology Transfer
- Business Development
- Market Development Fund
- Market Profile
- State Leadership



# Education and Engagement

---

- Statewide campaign
- Tools, templates & media for locals
- Technical assistance for service providers, communities, businesses, institutions, and industry
- The State will continue to Lead-by-Example



# Benefits of a Statewide Campaign & Technical Assistance

---

- Provides Michigan residents with factual information
- Drives participation and cost-effectiveness
- Builds cross-sector awareness
- Gives service providers necessary compliance foundation





# Investment in Infrastructure (Gap 9)

---

- \$1.3 billion annual spend on waste
- \$3.2 billion private, public, and public-private partnership assets
- Public and Private investment necessary that will respond to market conditions resulting from goal of doubling recycling rate.





# \$ Funding

---

- State funding mechanisms to support
  - Planning and program implementation
  - Incentivize private and public capital and program investments needed to double recycling rate.
- Michigan Recycling Improvement Fund
  - Grant and low interest loans for planning, market development, technical assistance, outreach and engagement, measurement and compliance.





---

# Next Steps



# Ambitious Timeline

---

- 3 Parallel Paths
  - Legislative
  - Administrative
  - Communications



# Stakeholder Input

---

- Communications plan
- Legislation development
- Follow-up



# Michigan Department of Environmental Quality



800-662-9278

[www.michigan.gov/swra](http://www.michigan.gov/swra)



Sign up for email updates



Follow us on Twitter @MichiganDEQ



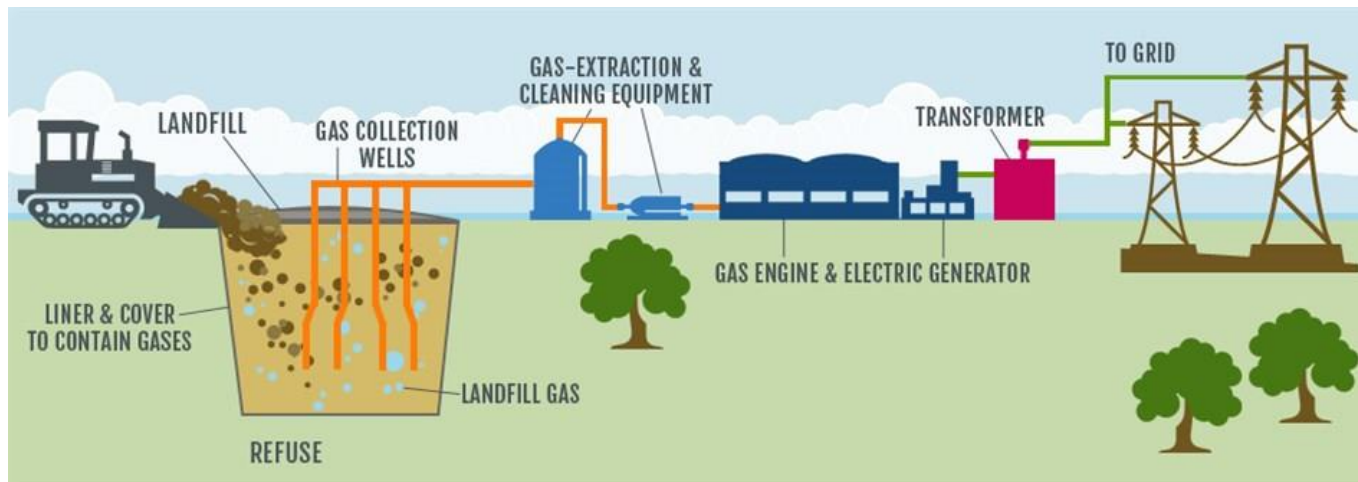


# Additional Panel Topics

---

- Food Scrap
- CCR
- Electroplater Case

# Organics



# Coal Combustion Residuals

---

- MI will likely pursue approval of a state program





Electro-Plating Service, Inc. (EPS)

# Electro-Plating Service, Inc. (EPS)

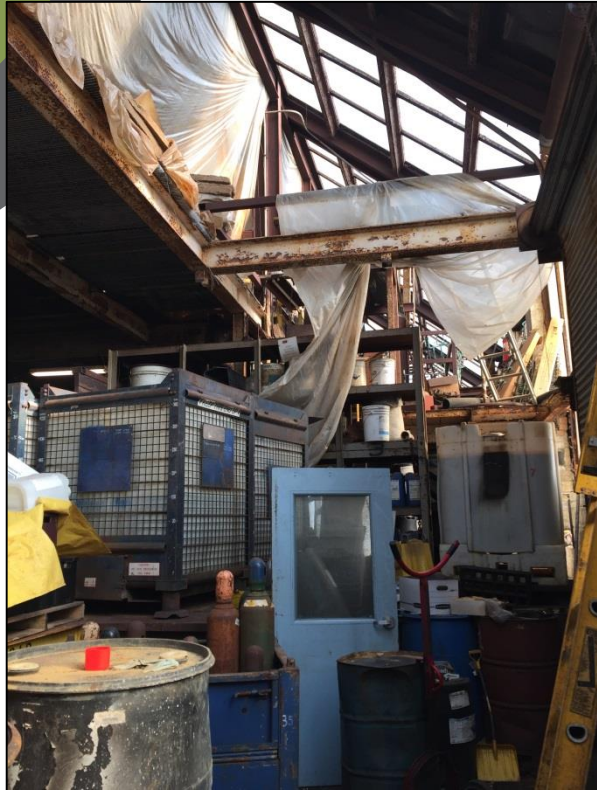
## *Imminent and Substantial Endangerment Case Study, Madison Heights, MI*

---

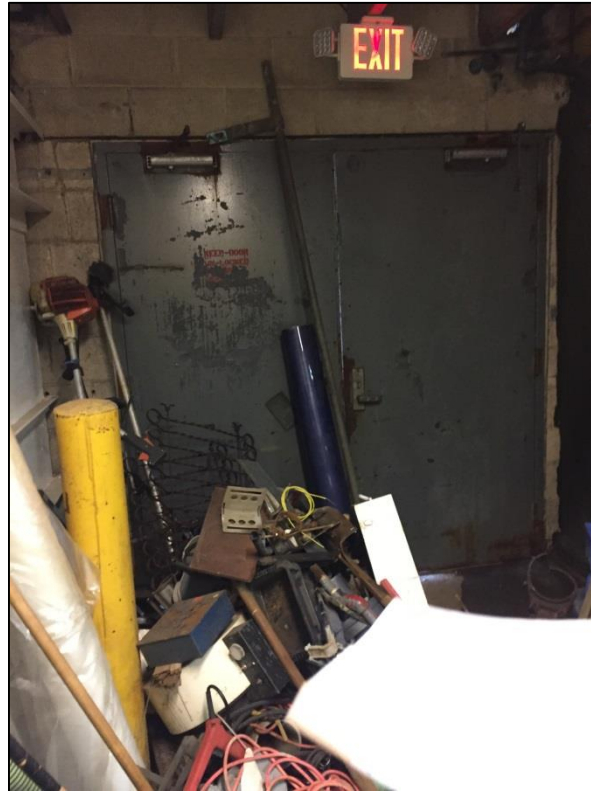
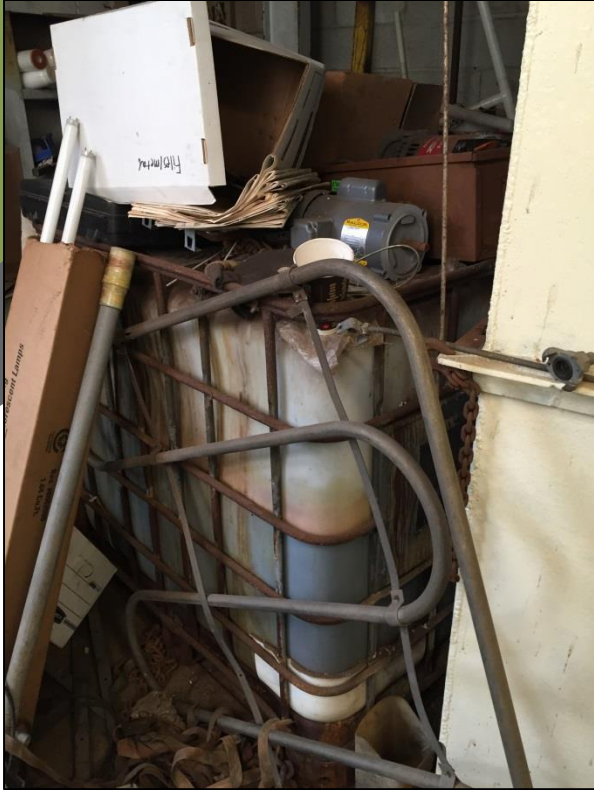


# November 2016 Inspection

---



# November 2016 Inspection (Continued)





# November 2016 Inspection (Continued)



# November 2016 Inspection (Continued)





# Imminent and Substantial Endangerment

---

- DEQ
- DHHS
- Cease and Desist
- Local coordination
- EPA time critical removal underway