



MICHIGAN DEPARTMENT OF
ENVIRONMENT, GREAT LAKES, AND ENERGY

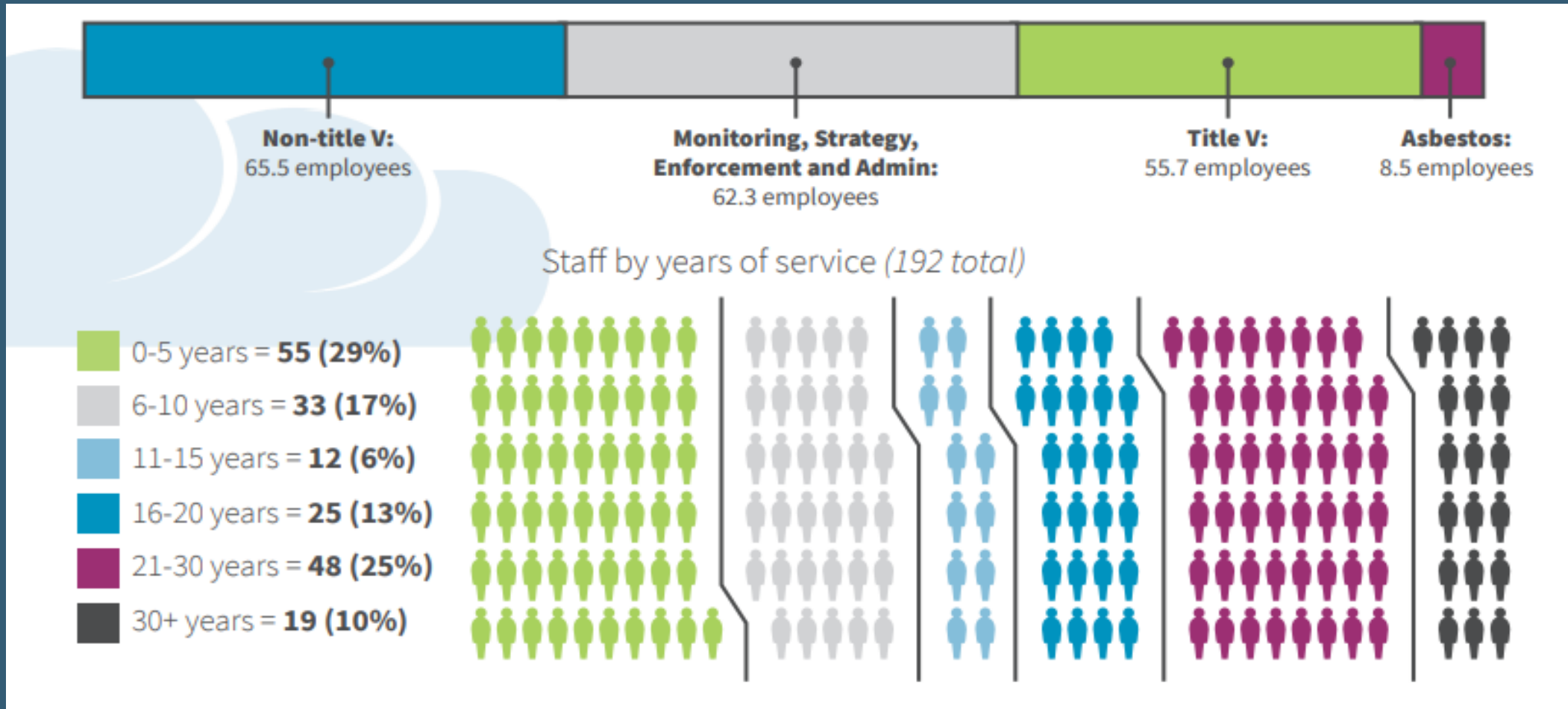
Air Quality Division

MISSION: PROTECT MICHIGAN'S AIR

EGLE ensures Michigan's air remains clean by regulating sources of air pollutants to minimize adverse impact on human health and the environment

ANNETTE SWITZER, AIR QUALITY DIVISION DIRECTOR

The AQD Team

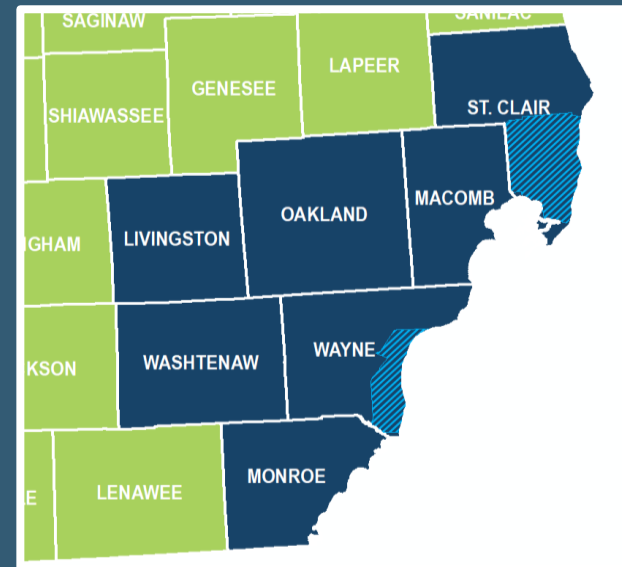
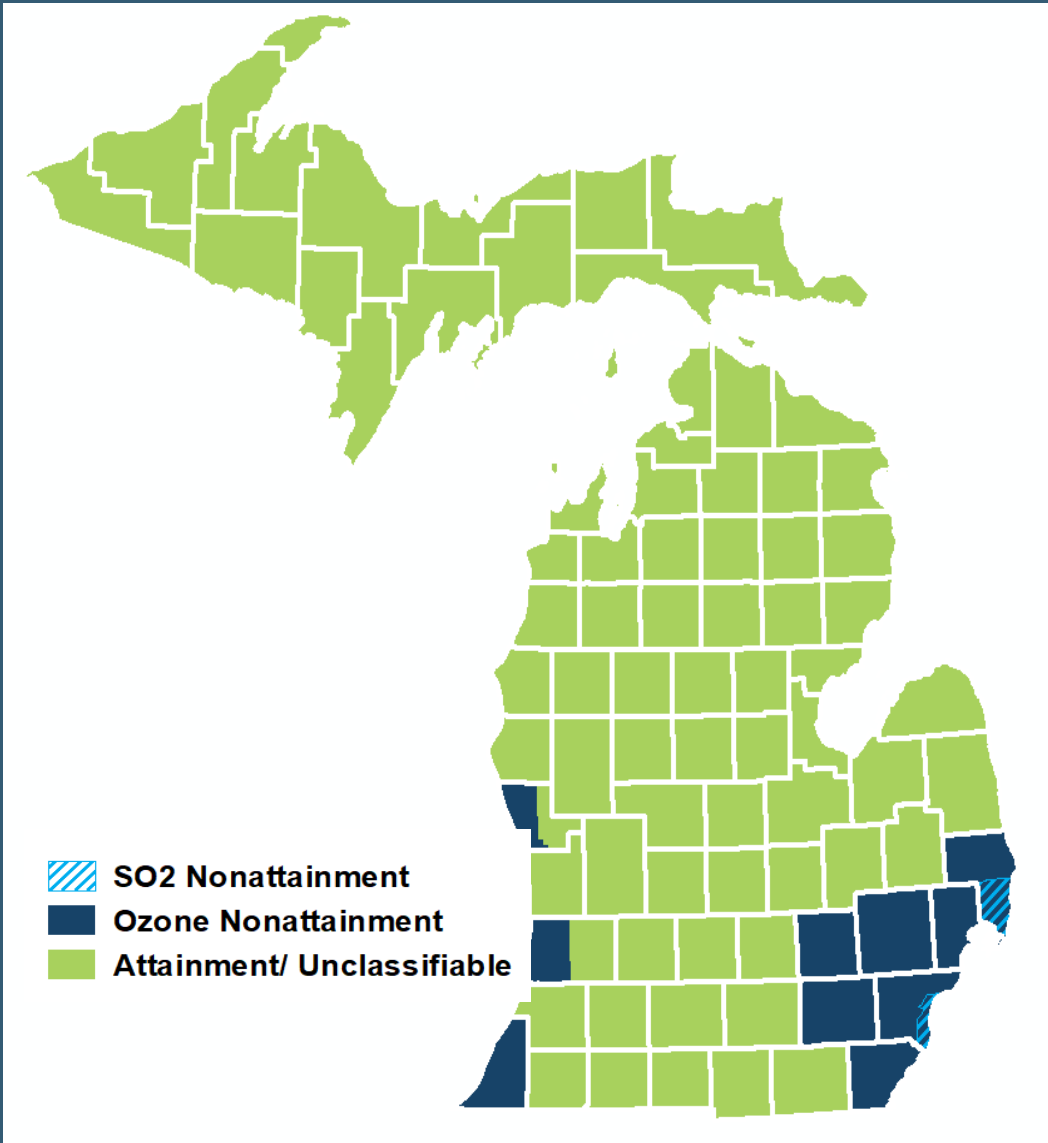


Air Quality Division (AQD) Year in Review 2021 (michigan.gov)

Michigan Air Quality Division FY23 Priorities

- Continue Attainment Planning
- Environmental Justice and Title VI Civil Rights
- MiEnviro Portal
- Transition and Hiring

NAAQS Attainment Status Map

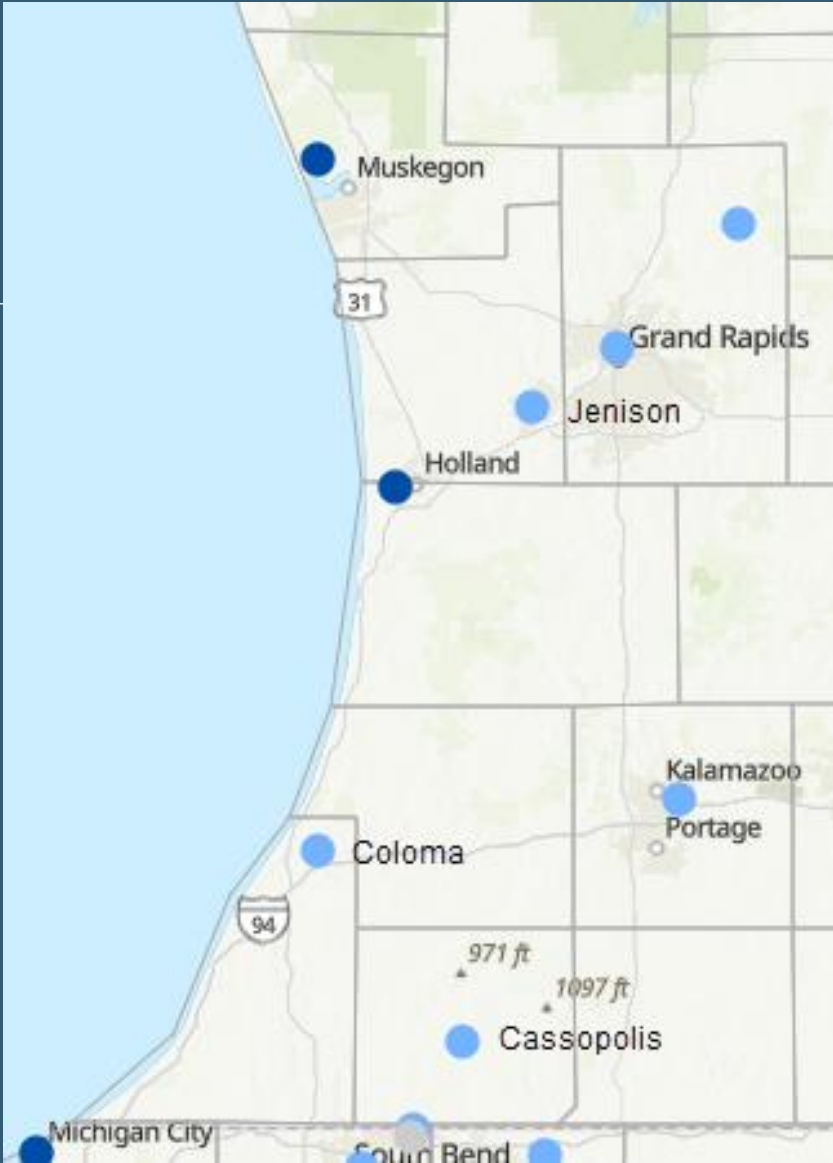




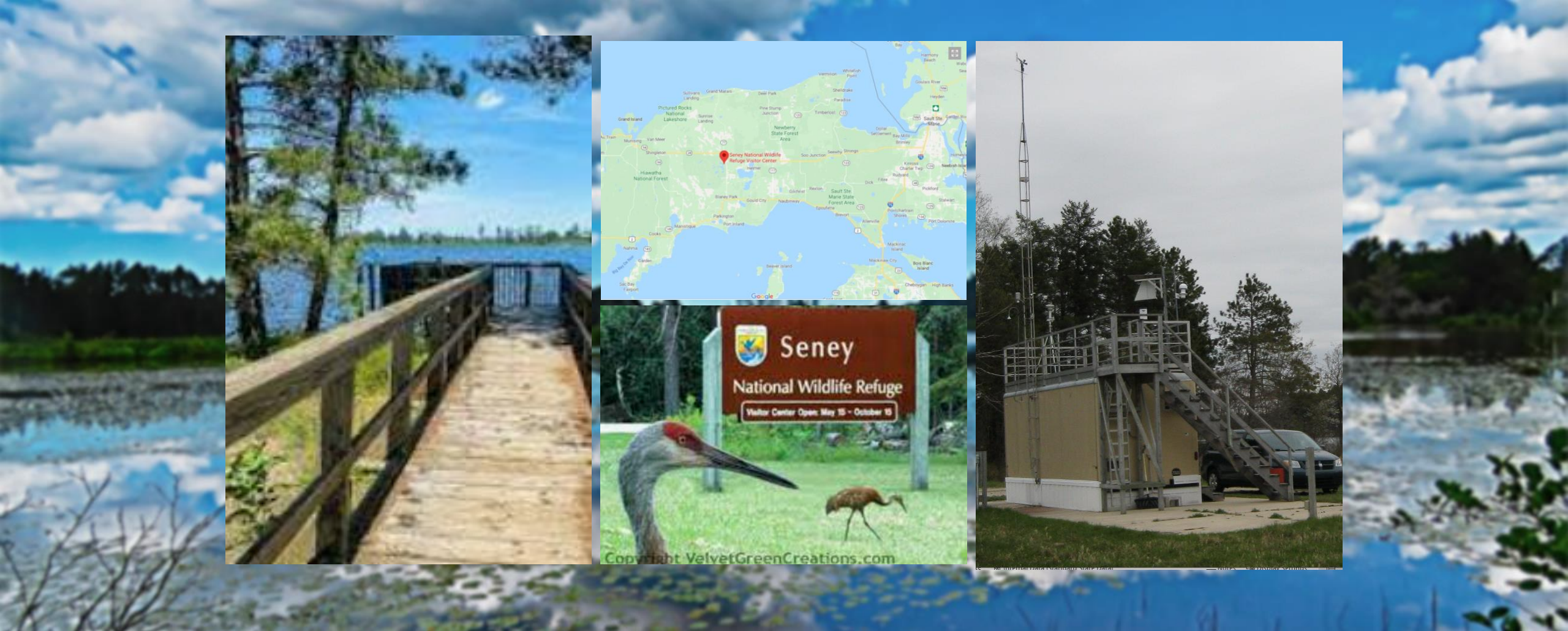
Southeast Michigan Ozone

- 7 Counties – Monroe, Wayne, Washtenaw, Livingston, Oakland, Macomb, St. Clair
- Planning –
 - NOx and VOC RACT

| Key Monitor | 2018 – 2020 Design Value (ppb) | 2021 Max Allowable 4 th High (ppb) | 2022 Max Allowable 4 th High (ppb) |
|-------------|--------------------------------|---|---|
| Muskegon | 76 | 64 | 57 |
| Jenison | 71 | 72 | 68 |
| Holland | 73 | 65 | 58 |
| Coloma | 72 | 68 | 65 |
| Cassopolis | 71 | 73 | 70 |



West Michigan Ozone



Seney National Wildlife Refuge



Lake Michigan Air Directors Consortium

- Training
- Air Quality Modeling
- Air Pollution Monitoring
- Emissions Modeling



<https://www.ladco.org>



Reduced time to prepare, submit, review, and process permits, emission reports and compliance information



Improved data retrieval and transparency for the public and other stakeholders



Central reporting website/portal for utilization by the regulated community and by other EGLE business areas



Customized control measures for improved data accuracy

MiEnviro Portal Benefits



Where is
Environmental
Justice
Incorporated Into
our Work?

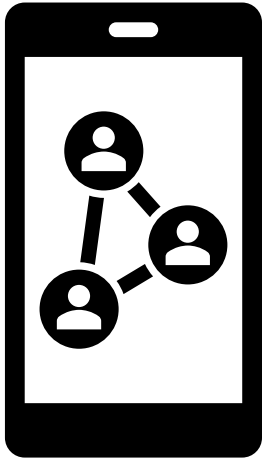
Permitting

Monitoring

Integrated Resource Planning

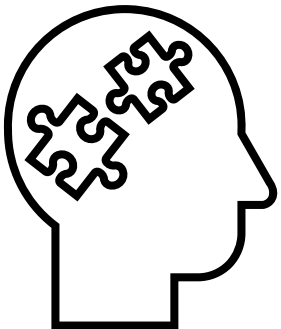
Special Projects

Outreach and Communication



How is Environmental Justice Considered in a Permit Review?

- Evaluate community needs
- Limited English Proficiency
- Tools and Resources:
 - Local community leaders
 - US EPA EJ Screening Tool
 - When finalized - MiEJScreen
 - Knowledge and history of area

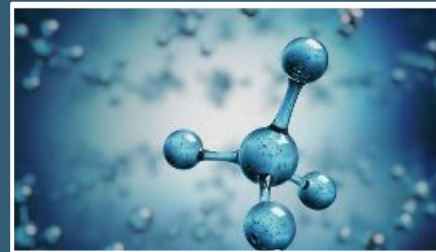


From EPA

- Formation of [Office of Environmental Justice and External Civil Rights](#)
- EJ in NSR Permitting [FAQ](#)
 - Considerations during permit review
 - Other measures outside of air permitting
- More to Come
 - Cumulative Assessment Guidance
 - Minor NSR
 - PM2.5 NAAQS



Transition and Hiring





MICHIGAN DEPARTMENT OF
ENVIRONMENT, GREAT LAKES, AND ENERGY

Annette Switzer, AQD Division Director
SWITZERA2@michigan.gov

800-662-9278 | Michigan.gov/EGLE