



Relmagine Trash

Our Journey Toward Zero



Source: City of Grand Rapids Community Archives and Research Center



Source: City of Grand Rapids Community Archives and Research Center

Grand Rapids Herald



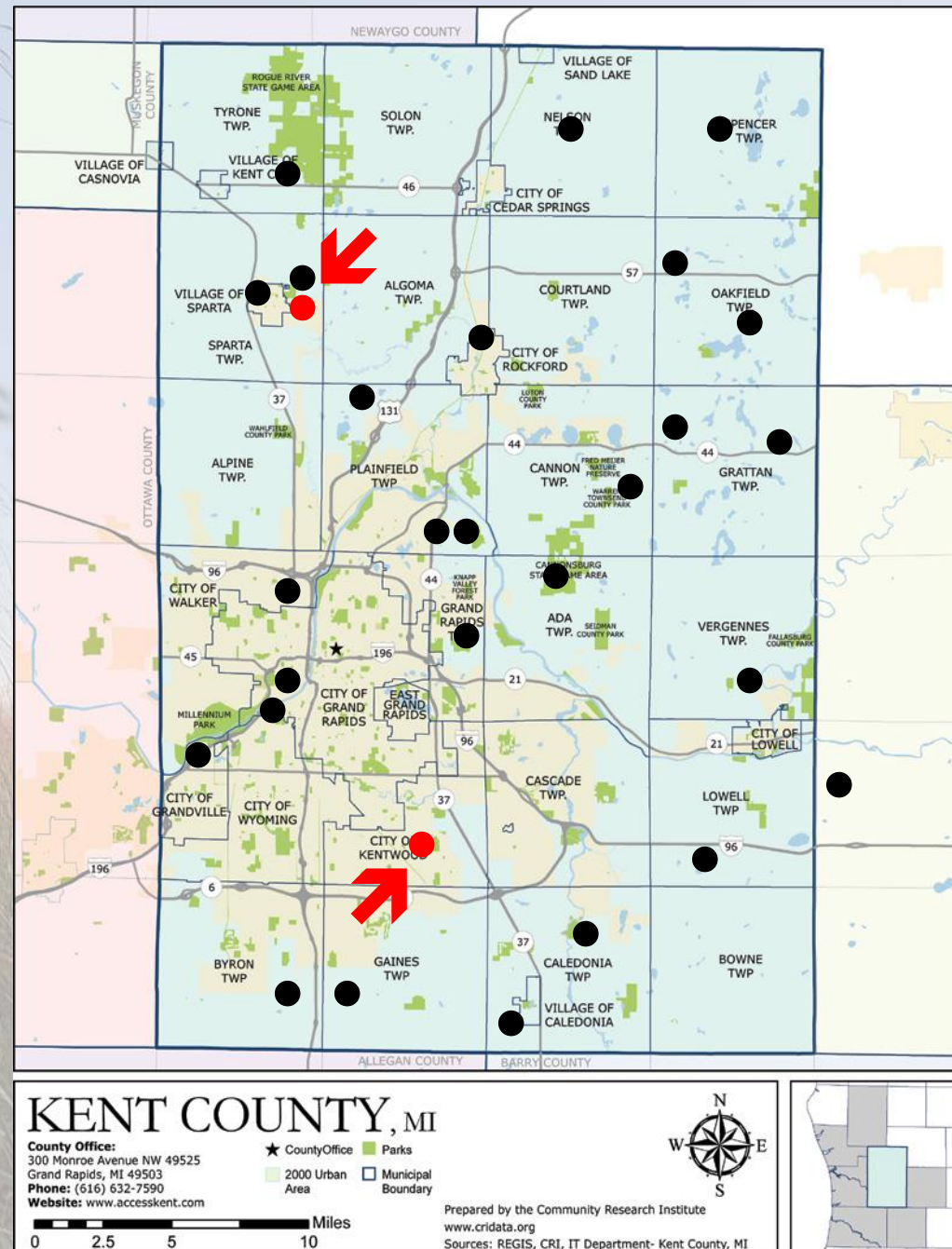
July 24, 1897

Source: Grand Rapids Public Museum



Source: City of Grand Rapids Community Archives and Research Center

By 1965, Kent County had
29 local, municipal and
privately owned open
dumps.



Integrated Solid Waste Management System



Recycling & Education Center



South Kent Landfill



Waste-to-Energy Facility



North Kent Transfer Station



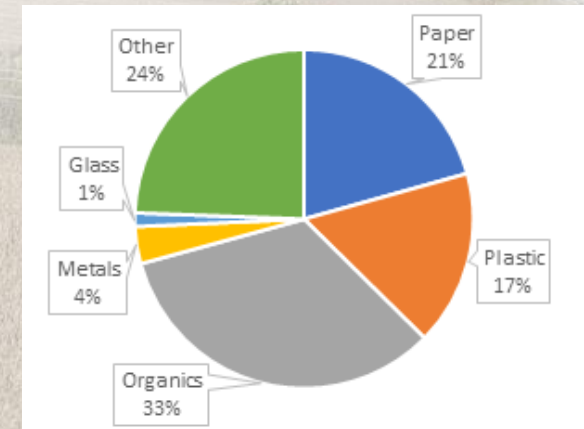
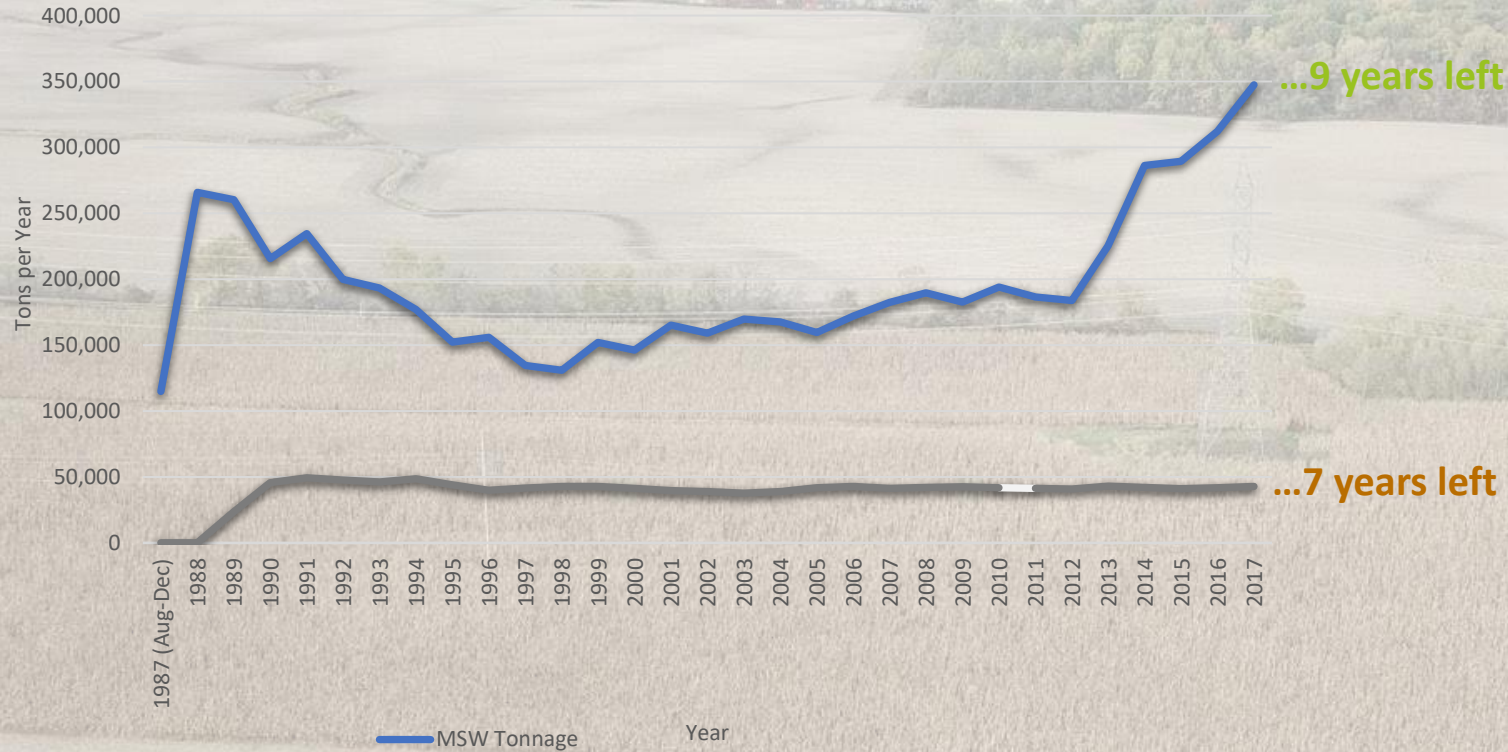
**KENT COUNTY
DEPARTMENT OF
PUBLIC WORKS**







South Kent Landfill Tonnage (MSW and Ash)



2016: Landfilling will not be our legacy.

Only 25% of residential recycling in Kent County is collected/processed into commodities.

The remaining 75,000 tons are thrown away.





Landfilling 2 million CY3 annually



**KENT COUNTY
DEPARTMENT OF
PUBLIC WORKS**

Landfilling is a waste



**KENT COUNTY
DEPARTMENT OF
PUBLIC WORKS**

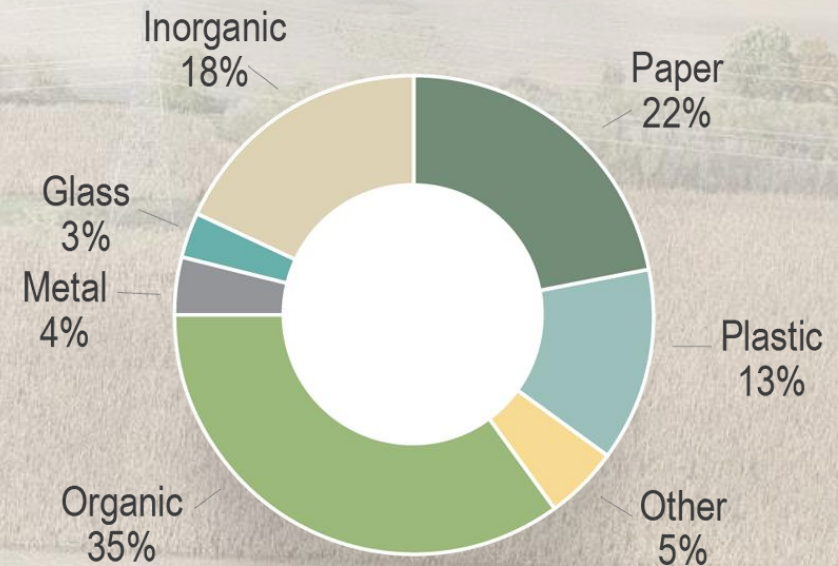


**KENT COUNTY
DEPARTMENT OF
PUBLIC WORKS**

2015: WMSBF Waste Characterization Study



Kent Municipal Solid Waste
Composition (mean % by weight)



Source: West Michigan Sustainable Business Forum
2016 Michigan MSW Valuation Study. wmsbf.org/msw

2016: Landfilling will not be our legacy.

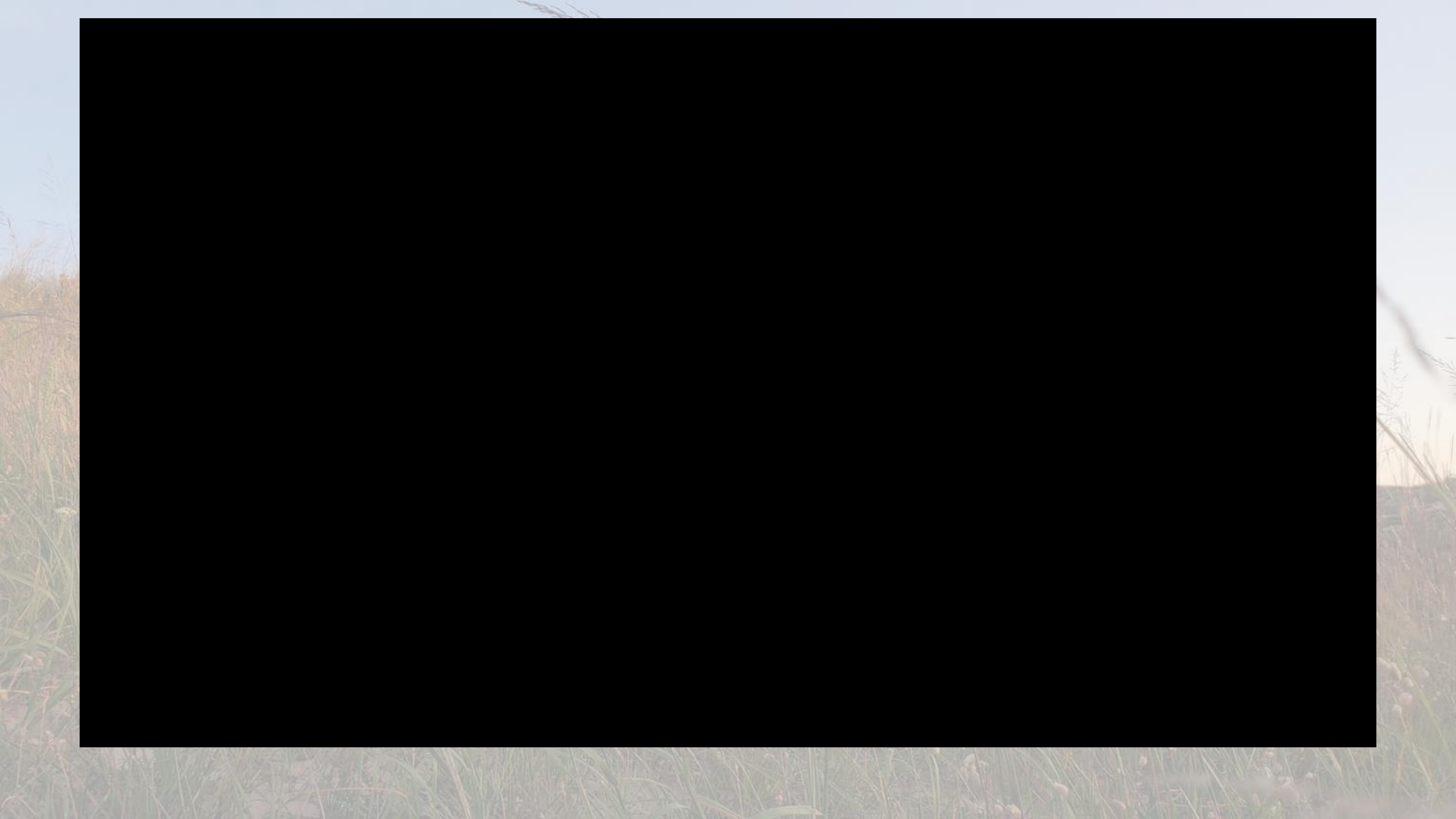
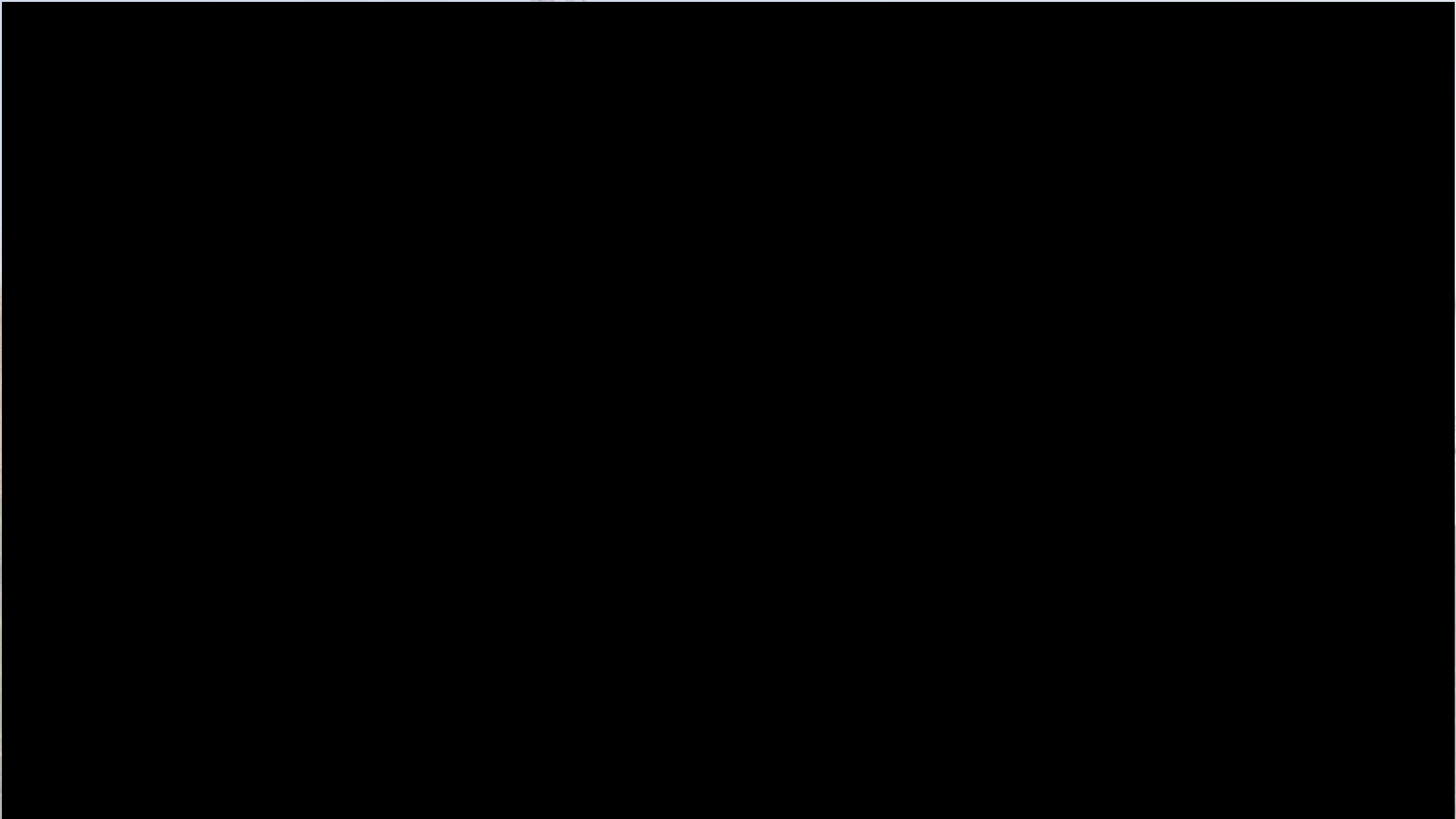
2020

20%

REDUCE LANDFILL WASTE
20% by 2020 | 90% by 2030

2030

90%



Kent County Sustainable Business Park



**KENT COUNTY
DEPARTMENT OF
PUBLIC WORKS**

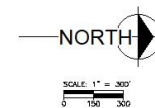
Mixed Waste Processing



- POTENTIAL SYSTEMS**
- PHASE 1 PUD
 - PHASE 2 PUD
 - DEDICATED/PRESERVED OPEN SPACE
 - FUTURE/RESERVED FOR MDOT RIGHT-OF-WAY
 - STORMWATER MANAGEMENT AREA
 - REGULATED WETLAND AREA (7.8 ACRES)
 - PUBLIC/STAFF ROADWAY
 - TRUCK TRAFFIC ROADWAY

CONCEPTUAL PLAN

THE LAND USE AND LAYOUT INDICATED IS CONCEPTUAL IN NATURE



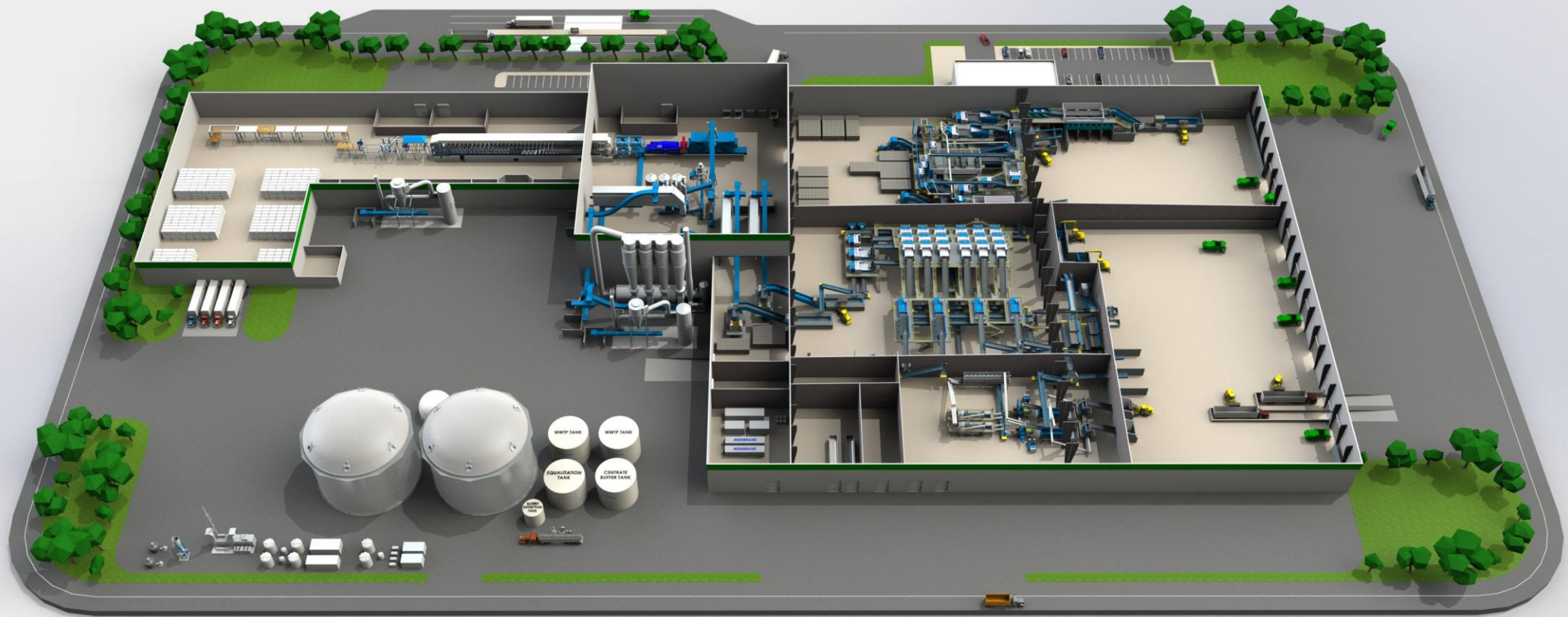
Kent County Sustainable Business Park

Conceptual Plan 2C

fishbeck
Engineers | Architects | Scientists | Constructors

November 2021

191460



60% Landfill Diversion + Outputs:



**Roof
Coverboard**



Fertilizer



**Renewable
Natural Gas**



**Recyclable
Commodities**

Waste Characterization Study

1M tons of commodities to
be recovered from waste
stream over next 25 years.

\$300M value.

(metal, plastic, glass, paper and old
corrugated cardboard)

Kent County Department
of Public Works
2021 Municipal Solid Waste
Characterization Study



March 2022

Prepared for:

Darwin J. Baas
Director
Department of Public Works
Kent County, Michigan
1045 Wealthy Street SW
Grand Rapids MI 49504

Prepared by:

Bradley Kelly
Senior Project Engineer
Gershman, Brickner & Bratton, Inc.
2010 Corporate Ridge, Suite 510
McLean, VA 22102



**KENT COUNTY
DEPARTMENT OF
PUBLIC WORKS**

Roof Cover Board Is A High Performance Product

Roof cover board provides a durable layer under the membrane that protects the insulation while enhancing the overall strength and performance of the roof

TYPICAL SINGLE-PLY ROOF COVER BOARD INSTALLATION



1. **Membrane** - waterproof layer
2. **Adhesive** - adheres membrane to cover board
3. **Roof Cover Board** - strength; durability
4. **Fasteners and Plates**
5. **Insulation** - energy efficiency
6. **Metal Roof Deck** – supports insulation

Everboard Has Proven Performance with Multiple Customers

Everboard has been successfully supplied in over **200** commercial roofing installations.



Retail / Office



Warehouse / Data Center



Manufacturing



www.reimaginetrash.org



**KENT COUNTY
DEPARTMENT OF
PUBLIC WORKS**