



MICHIGAN DEPARTMENT OF  
ENVIRONMENT, GREAT LAKES, AND ENERGY

# Materials Management Regulations and Michigan's Marijuana Industry

---

Rhonda Oyer

Materials Management Division

January 16, 2020

# Environmental Assistance Center



Your single point of entry into all EGLE environmental programs.



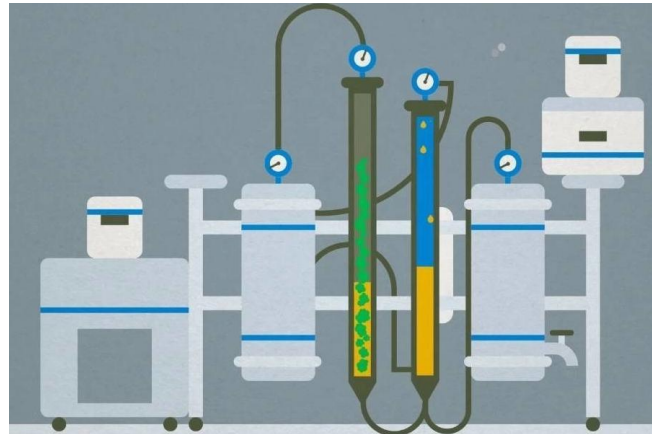
800-662-9278



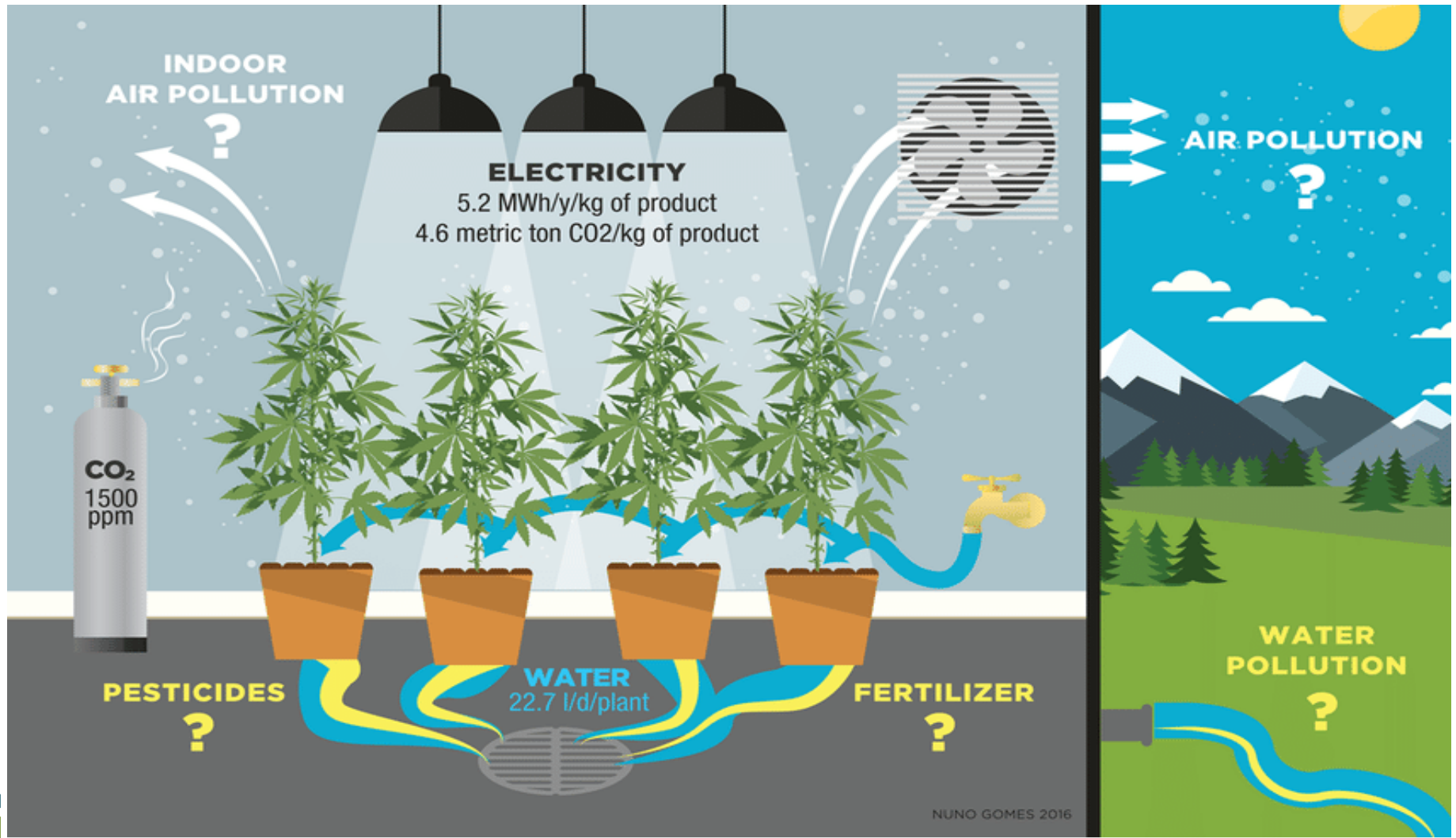
[egle-assist@michigan.gov](mailto:egle-assist@michigan.gov)

# Environmental Impacts of the Marijuana Industry

- The largest environmental impacts are seen from **cultivation and processing**
- Retail and consumption is not regulated by EGLE



# Applicable Environmental Regulations



# Materials Management

- Marijuana wastes must be made **unusable and unrecognizable**
- Done by grinding and mixing with at least 50% non-marijuana wastes
- Examples of acceptable non-marijuana wastes: paper, plastic, cardboard, food, grease, fermented organic matter, or soil





# Materials Management

Once made unusable and unrecognizable, can be:

- Disposed into a licensed municipal solid waste landfill
- Composted at approved and registered yard waste composting facility
- Sent to an approved anaerobic digester
- Sent to a licensed municipal solid waste incinerator or a licensed hazardous waste incinerator

# Materials Management

## Permits, Licenses and Authorizations

- Depending on the character and volume of waste generated, you may require a permit, license or other authorization to manage wastes from your facility
- For more information, see **Guidance:**  
**Solid Waste and Hazardous Waste Regulations for Growing and Processing Marijuana**

**EGLE** MICHIGAN DEPARTMENT OF ENVIRONMENT, GREAT LAKES, AND ENERGY

### SOLID WASTE AND HAZARDOUS WASTE REGULATIONS FOR GROWING AND PROCESSING MARIHUANA

Guidance

In order to protect Michigan's environment and comply with state and federal regulations, marihuana growing and processing operations may be subject to Michigan Department of Environment, Great Lakes, and Energy (EGLE) solid waste, hazardous waste, or liquid industrial by-product regulations. The following provides guidance on those requirements as may be applicable to marihuana cultivation and processing operations. Please note, while this list covers most state programs related to waste regulations, other federal, state, and local regulations or programs may apply.

---

#### CONTENTS

DEFINITIONS .....	2
Hazardous Waste .....	2
Listed Hazardous Waste.....	2
Characteristic Hazardous Waste .....	2
Universal Waste.....	2
Solid Waste .....	2
Liquid Industrial By-product .....	2
WASTE REGULATIONS ASSOCIATED WITH MARIHUANA PRODUCTION AND PROCESSING .....	2
WASTES GENERATED FROM GROWING AND PROCESSING MARIHUANA.....	3
Regulation of Unwanted Residuals from Marihuana Growing or Processing.....	3
Regulation of Liquid Industrial By-Products .....	4
Regulation of Solid Waste.....	4
What can I do with stems, seeds, roods, and soils generated from my operation?.....	4
What materials do I have to mix with my marihuana product and how much must I use? .....	4
What are the proper management standards for the mixture of marihuana product and non-consumable solid waste?.....	4
Where are licensed municipal solid waste incinerators located? .....	5
Permits, Licenses or Authorizations .....	5
Additional Information .....	5

800-662-9278 Michigan.gov/EGLE April 2019

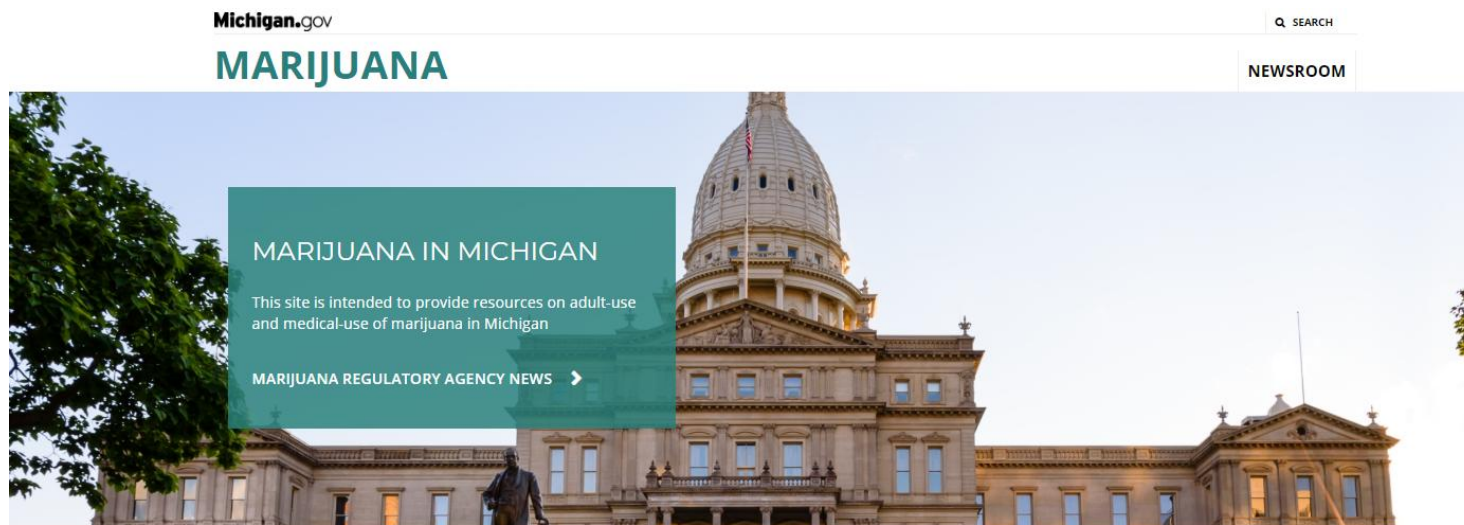
# Key Takeaways

- EGLE regulations apply to the marijuana industry
- Cultivation and processing facilities have potential for significant environmental impacts
- Research on what environmental regulations apply to a facility should be done before construction or installation of equipment



# Where to Find Guidance

[Michigan.gov/marijuana](https://Michigan.gov/marijuana)



## ADULT-USE MARIJUANA

On November 6, 2018, Michigan voters approved Proposal 1, creating the Michigan Regulation and Taxation of Marihuana Act (MRTMA).

Among other things, this Act delegates responsibility for marijuana licensing, regulation and enforcement to the Michigan Department of Regulatory Affairs (LARA). LARA's Marijuana Regulatory Agency (MRA) is responsible for the oversight of medical and adult-use (recreational) marijuana in Michigan.

View the Michigan communities that have notified LARA that they have opted out of the Licensed Facilities portion of MRTMA

The Marijuana Regulatory Agency and the Michigan Dept of Agriculture & Rural Development issued joint guidance on CBD (cannabidiol) and industrial hemp.



# Where to Find Guidance

[Michigan.gov/marijuana](https://www.michigan.gov/marijuana)

## SAFETY

- Public Health and Marijuana
- Food and Agriculture Product
- Specific Marijuana and Health Detail
- Health Effects
- MDHHS Marijuana Communications Toolkit

## OTHER RESOURCES

- Environmental Obligations for the Marijuana Industry
- Industrial Hemp
- Marijuana Use and Perception of Risk Among High School Students
- Michigan Municipal League Marijuana Resources
- An Overview of Michigan's Recreational Marijuana Law (source: PAAM)
- Michigan Recreational Marijuana Law Penalty Chart (source: PAAM)
- Notice to Employers and Claimants Concerning Medical Marijuana

# Where to Find Guidance

[Michigan.gov/marijuana](https://michigan.gov/marijuana)

Michigan.gov

Q SEARCH

MARIJUANA

NEWSROOM

MARIJUANA

## Environmental Obligations for the Marijuana Industry

Marijuana cultivation and processing are expanding, as both recreational and medical marijuana products are being legalized across the United States of America. As part of this expansion, it is important to determine what environmental regulations may apply. The Department of Environment, Great Lakes, and Energy (EGLE) has created several guidance documents to aid in the understanding of these regulations and where to go for help.

It is the responsibility of the licensee to comply with all applicable regulations.

### Guidance

#### Checklist: [Environmental Compliance for Growers and Processors of Marijuana](#)

This checklist provides a brief overview of potential regulations as well as links to helpful forms and documents. See links below for more specific information.

#### [Protection Water Resources when Growing and Processing Marijuana](#)

This guidance document covers most state programs designed to protect water quality. Please note that other federal, state, and local regulations or programs may apply.

#### [Solid Waste and Hazardous Waste Regulations for Growing and Processing Marijuana](#)

This guidance document covers most state programs related to waste regulations. Please note that other federal, state, and local regulations or programs may apply.

#### [Protecting Air Quality When Growing and Processing Marijuana](#)

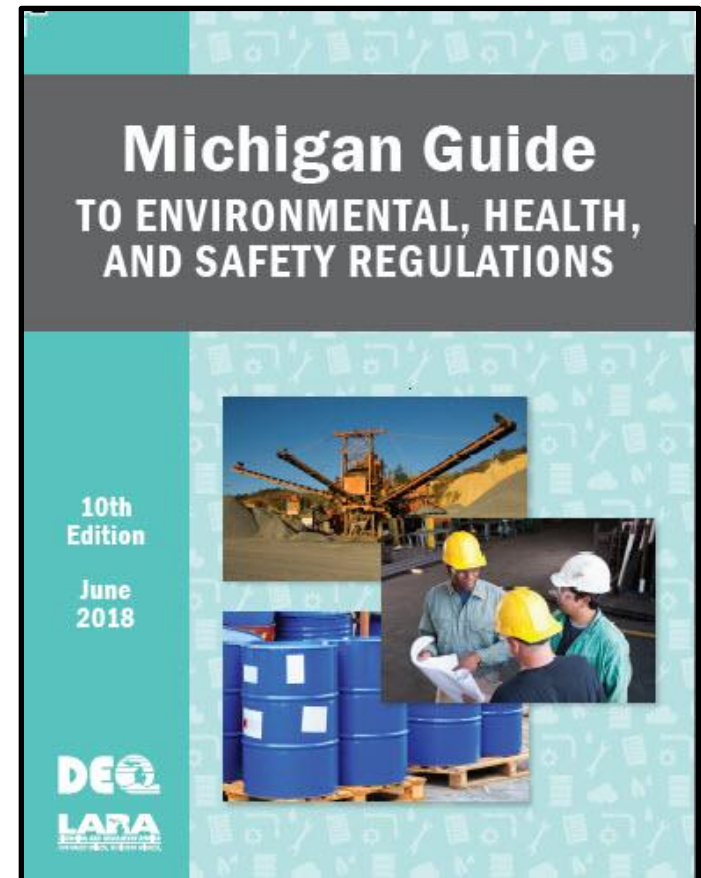
This guidance document covers most state programs related to air quality regulations. Please note that other federal, state, and local regulations or programs may apply.



# Where to Find More Help

## [Michigan Guide to Environmental, Health, and Safety Regulations](#)

**Self-Assessment Survey** is a tool you can use to find which regulations are applicable to your specific operation. Simply answer each question in the survey "yes" or "no" to be directed to the portions of the book relevant to your business.



# Environmental Assistance Center



Your single point of entry into all EGLE environmental programs.



800-662-9278



[egle-assist@michigan.gov](mailto:egle-assist@michigan.gov)

# Questions?

Rhonda Oyer, Manager  
Solid Waste Section  
Materials Management Division  
517-897-1395  
[oyerr@michigan.gov](mailto:oyerr@michigan.gov)



Michigan Department of  
**Environment, Great Lakes, and Energy**

800-662-9278

[www.Michigan.gov/EGLE](http://www.Michigan.gov/EGLE)



Sign up for email updates



Subscribe to our YouTube Channel



Follow us on Twitter @MichiganEGLE