



Environmental Challenges in 2020: COVID

Peter Ruddell

Agenda

- Public Health Crisis
- Emergency Declaration
- “Fork in the Road”
- Lawsuit Mania
- *In Re Advisory Opinion*: Michigan Supreme Court
- Current Regulatory Framework

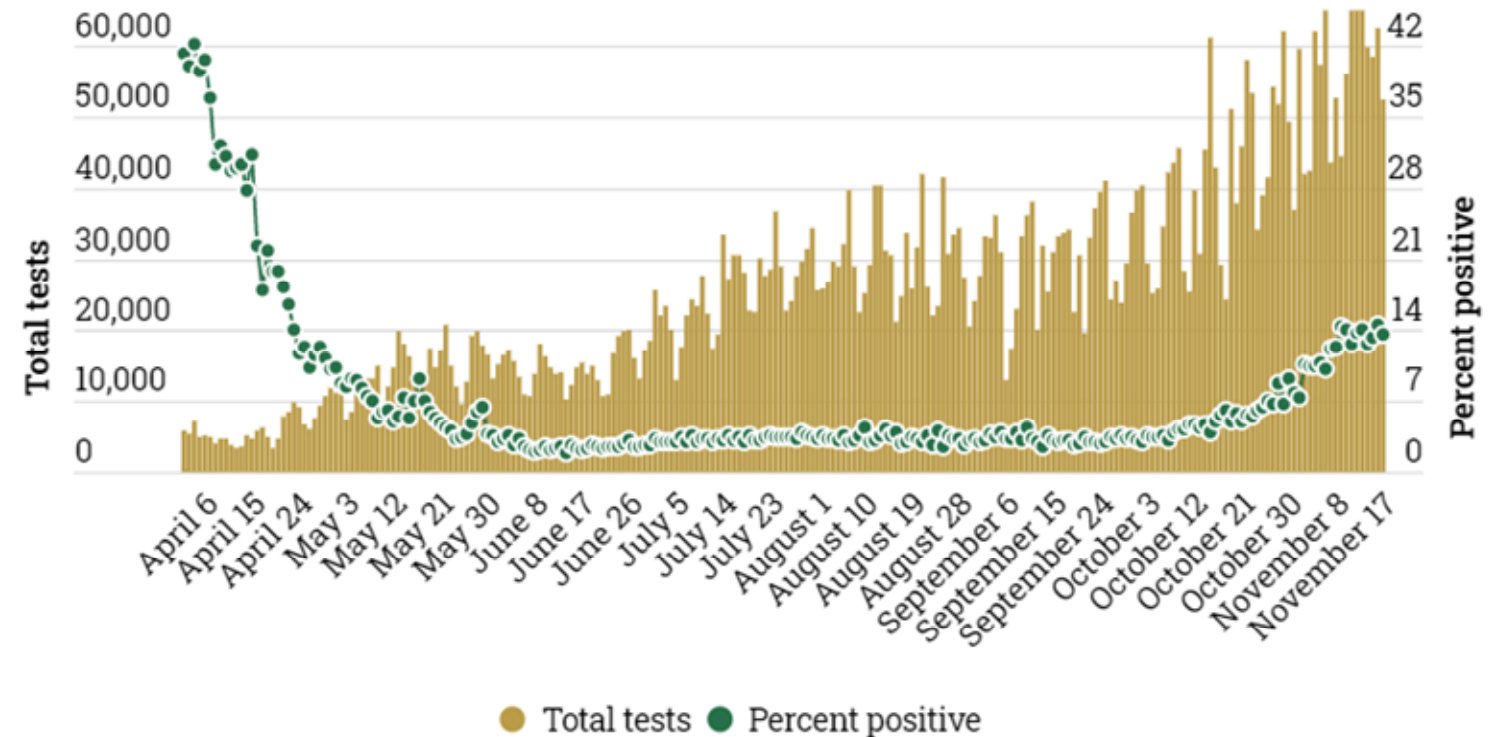


Public Health Crisis

Once in a Century Magnitude

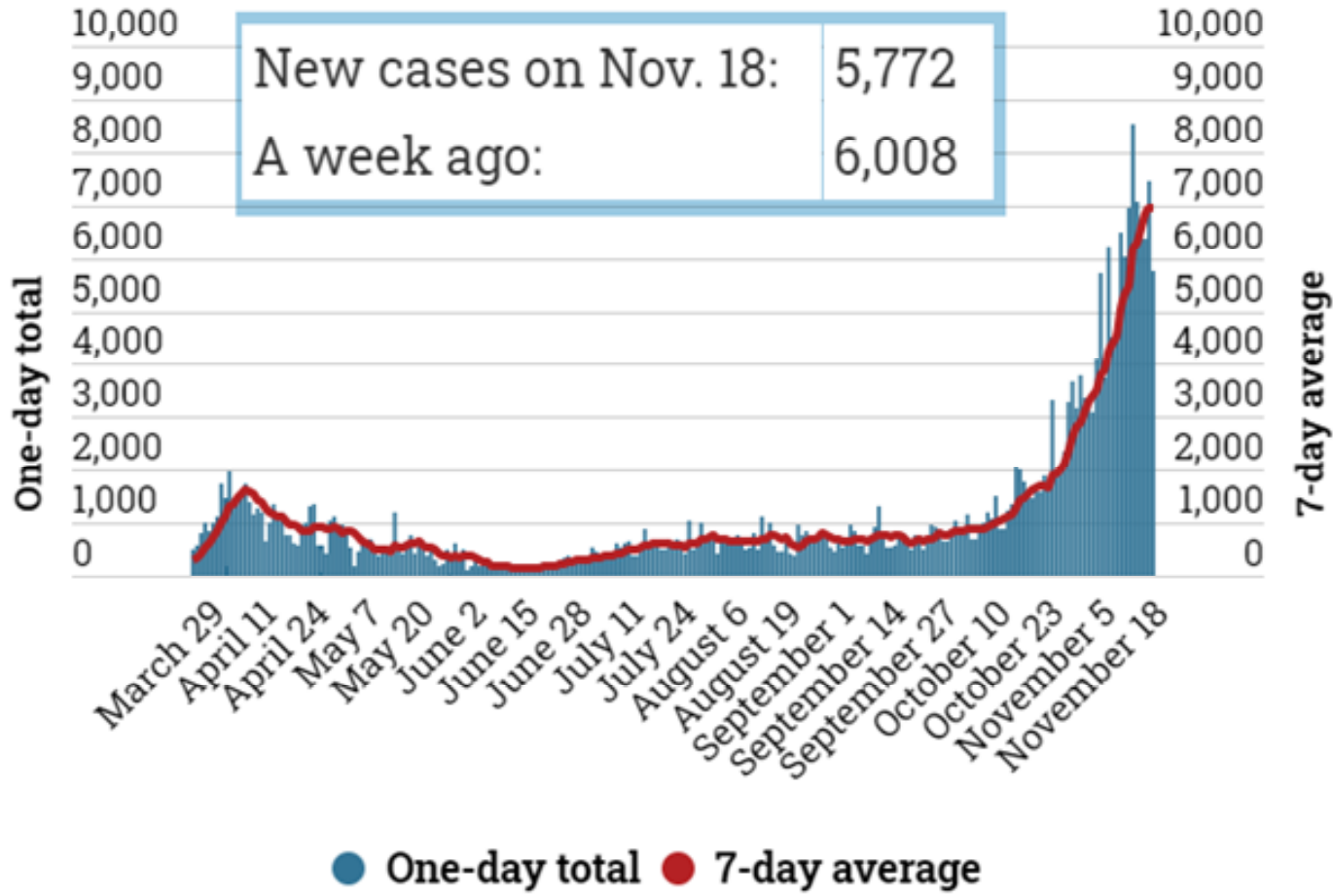
Daily testing results

Michigan health officials say the goal is to keep the positive test rate at 3 percent or lower, where it had hovered for months before beginning to rise in October, alarming state leaders.



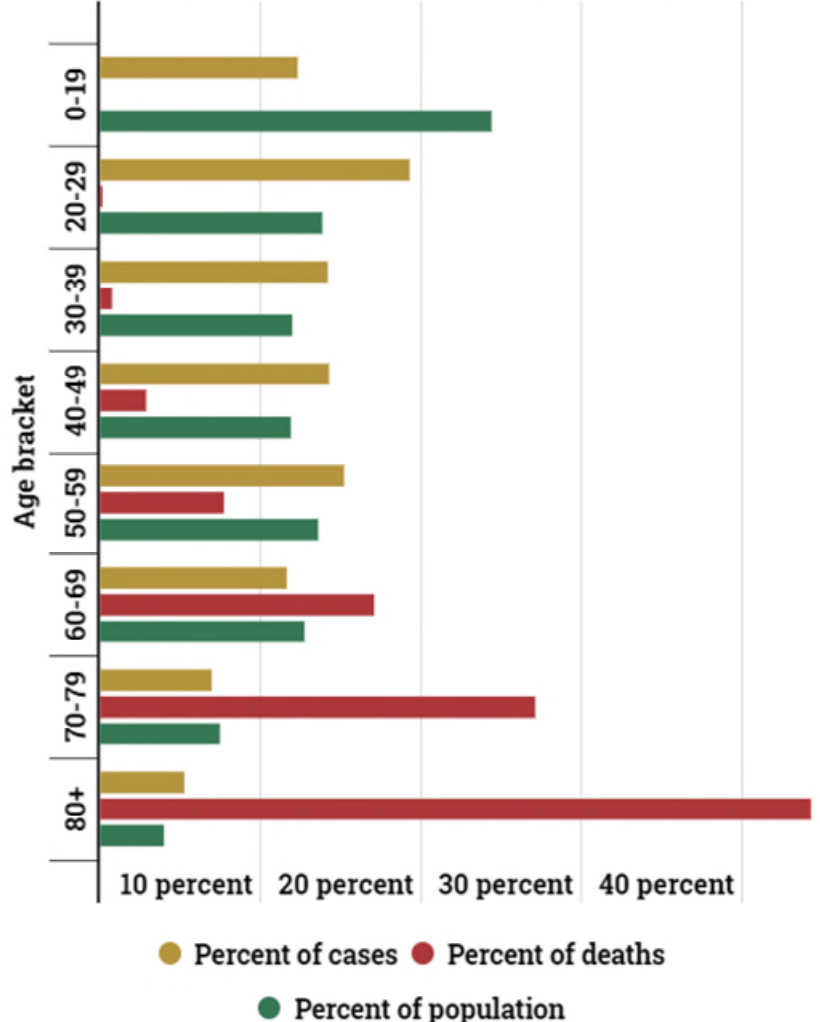
Daily cases

New cases each day since March 25



Age breakdown

The coronavirus has infected and killed people of all ages in Michigan but has hit the elderly particularly hard. Here's the current breakdown.



Outbreaks – ongoing 723

- Long Term Care (208 / 29%)
- K-12 Schools (152 / 21%)
- Manufacturing / Construction (63 / 9%)
- Health Care (56 / 8%)
- Colleges (34 / 5%)



Emergency Declaration

The Brief Time of Peace, Love and Harmony



“Fork in the Road”

CISA 2.0 and the Governor’s “Double Down”



Lawsuit Mania

Started with the landscapers “you can buy weed, but not seeds”

Michigan Supreme Court Decision

- EPGA – unconstitutional
- EMA – constitutional, but Legislature must concur
- Work Together

Regulatory Framework Today


- Public Health Code – epidemic emergency orders
- MIOSHA Emergency Rules
- Not quite lawsuit mania, but moving there... 4 as of yesterday

PAUSE TO SAVE LIVES

Open



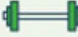
**Two-household gathering
(high precautions)***



**Hair salons, barber shops,
other personal services**



**Small outdoor gatherings
(25 people)**



**Gyms and pools
(for individual exercise)**



Retail



**Restaurants and bars (outdoor
dining, takeout, and delivery)**




**Preschool through 8th grade
(local district choice)**



Professional sports
(without spectators)**



Childcare



**Parks and outdoor
recreation**



**Manufacturing, construction,
other work that is impossible
to do remotely**



**Funerals
(25 people)**



Public transit




Health care

*See Social Gathering Guidance.
**Includes a limited number of NCAA sports.


Not open



**High schools
(in-person learning)**



**Theaters, movie theaters,
stadiums, arenas**



**Colleges and universities
(in-person learning)**



**Bowling centers, ice skating
rinks, indoor water parks**



**Workplaces, when work can
be done from home**




**Bingo halls, casinos,
arcades**



**Restaurants and bars
(indoor dining)**



Group fitness classes



**Organized sports, except
professional sports**

For more information about the order, visit Michigan.gov/Coronavirus.

Questions or concerns can be emailed to COVID19@michigan.gov.



WWW.HONIGMAN.COM

Wear a Mask

Keep your Distance

Wash your Hands

Thanks to Bridge Michigan
for the graphs:

<https://www.bridgemi.com/>