

## Project Execution

- COVID-19 Decon Request – Phone Call / E-Mail
  - Review Scheduling time
  - Determine Disinfectant
  - Site Visit May be required
  
- Mobilization
  - Site Superintendent meets with on-site Contact
  - Ensure Area of Concern is Isolated
    - Warning Tape and Signage
    - Barriers
    - Seal off Area
  - Bring in Necessary Equipment

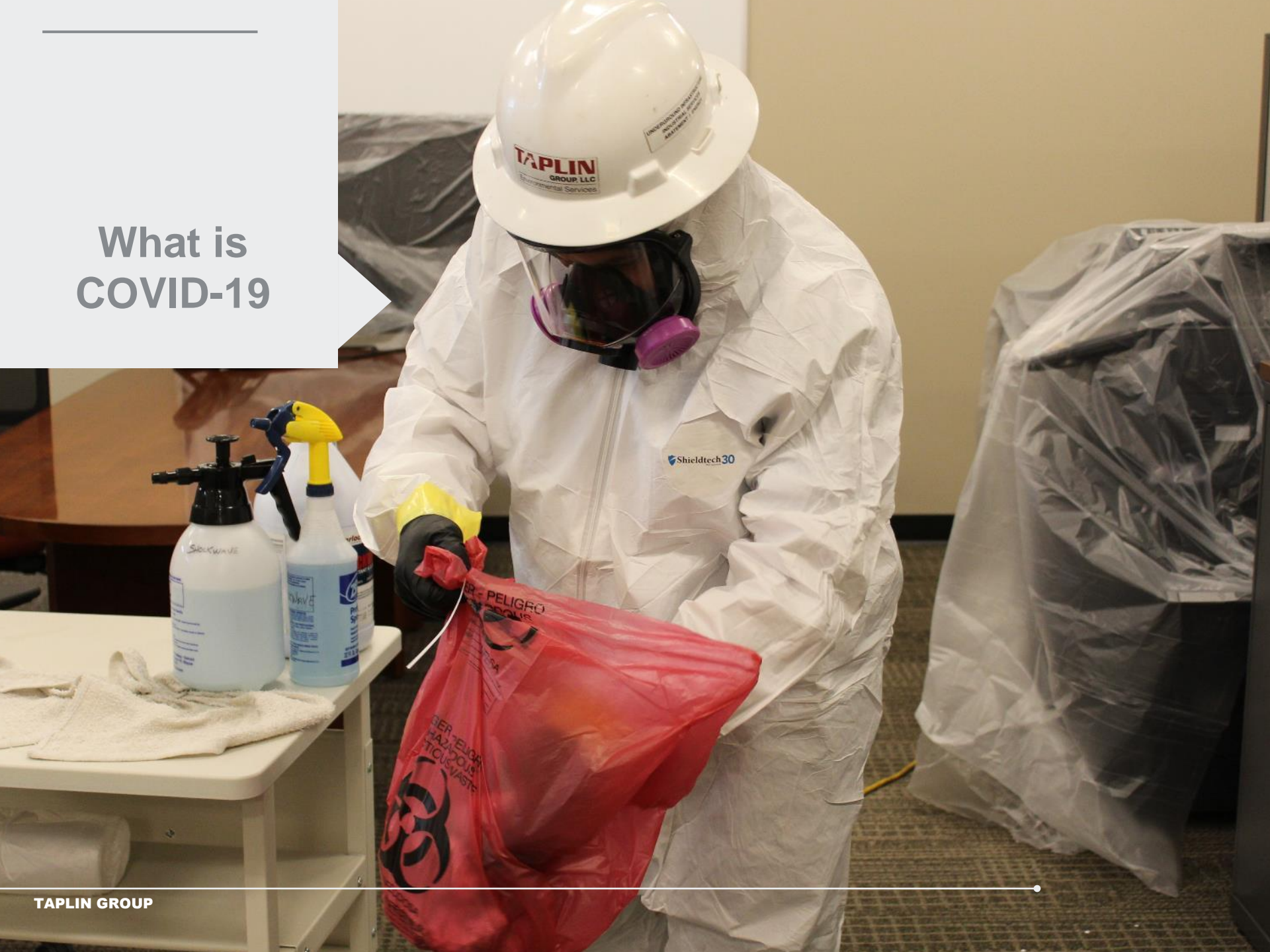
## Project Execution

- Project Start-Up
  - Green Zone Suit-up
  - Build Containment, as necessary
  - Negative Ventilation (HEPA Filter)
  
- Cleaning
  - Clean dirty areas
  - Fog the Area of Concern, may be required
  - Allow Dwell time
  - Wipe up
  - Re-clean High Contact Area
    - Switches, Door knobs.
    - Desks, key boards, Arms on Chairs etc.

## Project Execution

- Demobilization
  - Level C
    - Spray down of each other
    - Allow Dwell time
    - Doff PPE
    - Package PPE for Disposal
  - Level D
    - Breakdown Enclosure
      - Inside Out
      - Vent Covers
      - Barrier Tape
      - Warning Signs

# What is COVID-19

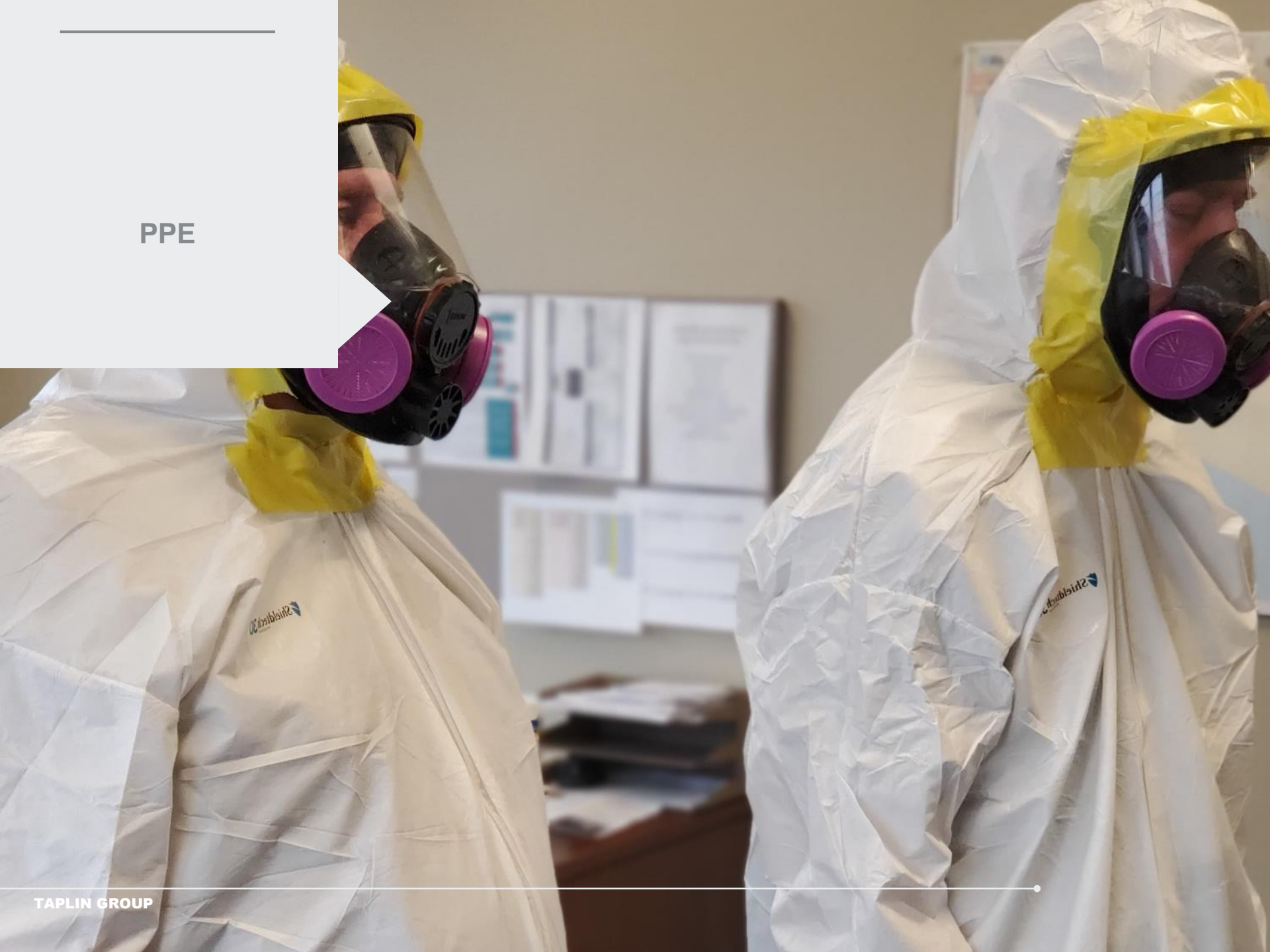


## What is COVID-19 (Coronavirus) & effects on personnel:

- COVID-19 or Coronavirus disease 2019 is a respiratory illness that can spread from person to person. The virus that causes COVID-19 is a novel coronavirus that was first identified during an investigation into an outbreak in Wuhan, China.
- Patients with COVID-19 have had mild to severe respiratory illness with symptoms of: fever, cough, and shortness of breath

---

PPE



## Personal Protective Equipment (PPE):

- Suits, gloves, full face respirators, P100 cartridges
- Gloves: black nitrile and green (taped)
- Personal clothes pants, shorts, and t-shirts
- Donning and doffing PPE
- Why did we select this PPE?
- Research shows this level of PPE is effective against COVID-19

## Respirators

- Review respirator procedures and use
- Medical Clearance
- Fit Test
- Each Employee is assigned a respirator
- Breakdown and decon respirator



Hazcom:  
SDS 16



## Hazcom: SDS & 16 areas

- SDS & 16 areas on the SDS for product being used to decontaminate building

## Review JSA & SOP

- JSA handout
- Review SOP

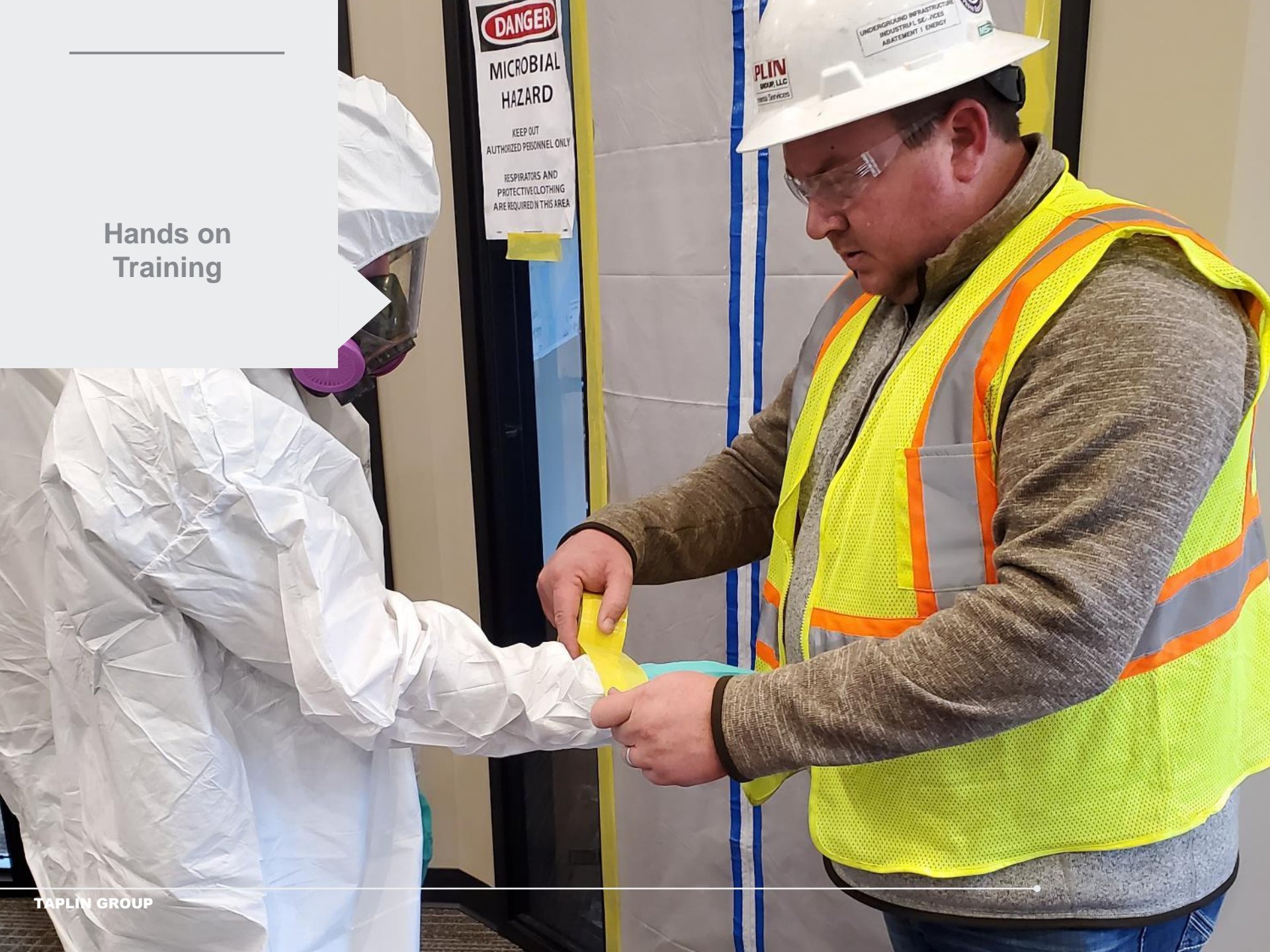
Job Safety Analysis

JSA

- JSA handout

COMPANY/PROJECT NAME or ID/LOCATION (City, State)		DATE	NEW/REVISED
Taplin Group, LLC		03/10/2020	NEW x REVISED
WORK ACTIVITY (Description):			
<b>(JSA #14) Microbial Disinfection</b>			
DEVELOPMENT TEAM		REVIEWED BY	POSITION/TITLE
Steve Taplin	President	Greg Moe	Vice President of Abatement Services
Stephanie Graham	Emergency Response Coordinator	Keith Schillo	Vice President of Safety
MINIMUM REQUIRED PERSONAL PROTECTIVE EQUIPMENT (SEE CRITICAL ACTIONS FOR ADDITIONAL STEP-SPECIFIC REQUIREMENTS)			
<input checked="" type="checkbox"/> Reflective Vest	<input type="checkbox"/> Goggles	<input checked="" type="checkbox"/> Full-face Air Purifying Respirator with P-100 HEPA cartridges	<input checked="" type="checkbox"/> Gloves - 2-layers of nitrile gloves and Cut Proof Type II or higher work gloves
<input type="checkbox"/> Hard Hat	<input type="checkbox"/> Face Shield	<input type="checkbox"/> Supplied Air Respirator	<input checked="" type="checkbox"/> Other - Protective Suit and Hood with Booties
<input type="checkbox"/> Lifeline/Harness	<input type="checkbox"/> Hearing Protection	<input checked="" type="checkbox"/> PPE Clothing - Long sleeve shirts	
<input checked="" type="checkbox"/> Safety Glasses	<input checked="" type="checkbox"/> Safety Shoes - Type: Over ankle, Steel Toe Boots with Chicken Boot Covers		
REMINDER: Complete an SPSA at start of, and continuously throughout, job/task to identify additional and/or changing hazards to act on.			
1 JOB STEPS		2 POTENTIAL HAZARDS	
3 CRITICAL ACTIONS TO MITIGATE HAZARDS			
NOTE: Job Steps, Potential Hazards and Critical Actions to Mitigate Hazards should be line formatted and/or numbered to ensure direct correlation for reviewers and field personnel. E.g. Job Step #1, Hazards #1A, 1B., Critical Actions #1Aa, 1Ab., 1Ba, 1Bb...			
<b>STOP WORK AUTHORITY</b>	<ul style="list-style-type: none"> <li>All hazards below must be recognized by personnel performing task.</li> </ul>	<ul style="list-style-type: none"> <li>All conditions below must be met or stop work by personnel will be used until conditions are met.</li> </ul>	
1. Set Up Work Area and Equipment	1a. Falls - Personal Injury from slip, trips and falls in work area	<ul style="list-style-type: none"> <li>Ensure work area is clear of all trash, debris or tools that may create potential trip hazards</li> <li>Remove loose items, hand tools and supplies from walking/working area</li> <li>Wear a high visibility reflective vest when outside of the regulated work area to increase visibility</li> <li>Sure footing</li> <li>Inspect equipment</li> </ul>	
	1b. Ergonomics - Sprains/strains from lifting equipment and supplies	<ul style="list-style-type: none"> <li>Use lifting techniques to prevent back injury get help with awkward or over 50-pound loads, bend at knees, lift with legs keeping back straight, and avoid twisting motion.</li> <li>If required to place knees on ground or hard surface, knee pads must be worn for protection.</li> </ul>	
	1c. Contact - Injury to eyes from loose dust in the work area	<ul style="list-style-type: none"> <li>Do not drop supplies - slowly lower to the ground to minimize disturbance of dust.</li> <li>Wear full-face respirators with P-100 HEPA cartridges when working to help prevent dust from contacting eyes.</li> </ul>	
2. Disinfection of Microbial Populations	2a. Exposure - Illness from exposure	<ul style="list-style-type: none"> <li>Disturb material as little as possible during removal</li> <li>Wear full-face respirators with P-100 HEPA cartridges to help prevent inhalation of dust.</li> <li>Wear Tyvek (or equivalent) suits with boot covers and nitrile gloves underneath cut proof Type II or higher work gloves for skin protection against microbial populations.</li> <li>If Shockwave content irritates crew, remove to fresh air and ventilate the work area.</li> </ul>	
	2b. Contact - Injuring hands, arms, fingers while using hand tools	<ul style="list-style-type: none"> <li>Daily tasks will be communicated during morning safety meeting.</li> <li>Following manufacture instructions when filling pump spray bottles with Shockwave solution</li> <li>Hand tools will be inspected prior to each use</li> <li>Damaged or worn tools will be tagged out, discarded and replaced.</li> <li>Wear cut proof Type II work gloves or higher when handling tools to prevent cuts and lacerations.</li> <li>Maintain five (5) feet from other employees when swinging tools.</li> <li>When using hand tools, have a firm grip so tool while not slip.</li> </ul>	

## Hands on Training



## Hands On Training for setup and decon:

- Suiting up and taping of suits to gloves
- Using buddy system
- Room Barrier setup with chambers: visqueen and PVC piping
- Decon procedures setup and removal of PPE
- Entering area through chamber barriers
- Taplin Health and Safety Manual – heat work cycle table
- Sealing off ventilation ducts
- Operating fogger & sprayers
- Fogging of room/wipe down high contact areas: phones, door knobs, chairs, and computers
- Review dwell time for Disinfectants
- Decon of workers to exit using spray bottle solution
- Spraying down buddy inside work area – up to 10 minute wait time
- Exit work area into chamber to doff PPE and respirator
- Break down enclosure and area
- Remove duct covers and discard used work clothes
- Hand wash station

Hands on



## Hands on exit Training:

- Spray down buddy inside work area
- Dwell time of Disinfectant-wait inside work area
  - Up to 10 minutes
- Exit work area into chamber to doff PPE and respirator
- Remove tape from around wrists and respirator
- Remove outer layer glove follow grab at wrist/roll into itself
- Remove suit by rolling suit into itself
- Remove respirator
- Remove inner glove follow grab at wrist/roll into itself
- Place all doffed PPE into clear disposable bag
- Exit into common area
- Breakdown enclosure and area
- Removal of critical barriers
- Equipment Decon with Disinfectant- step ladders, work chamber, barriers, containment pool, and PVC
- Remove duct covers and discard used work clothes
- Hand wash station – portable hand wash



---

**COVID-19  
Free Zone**



